

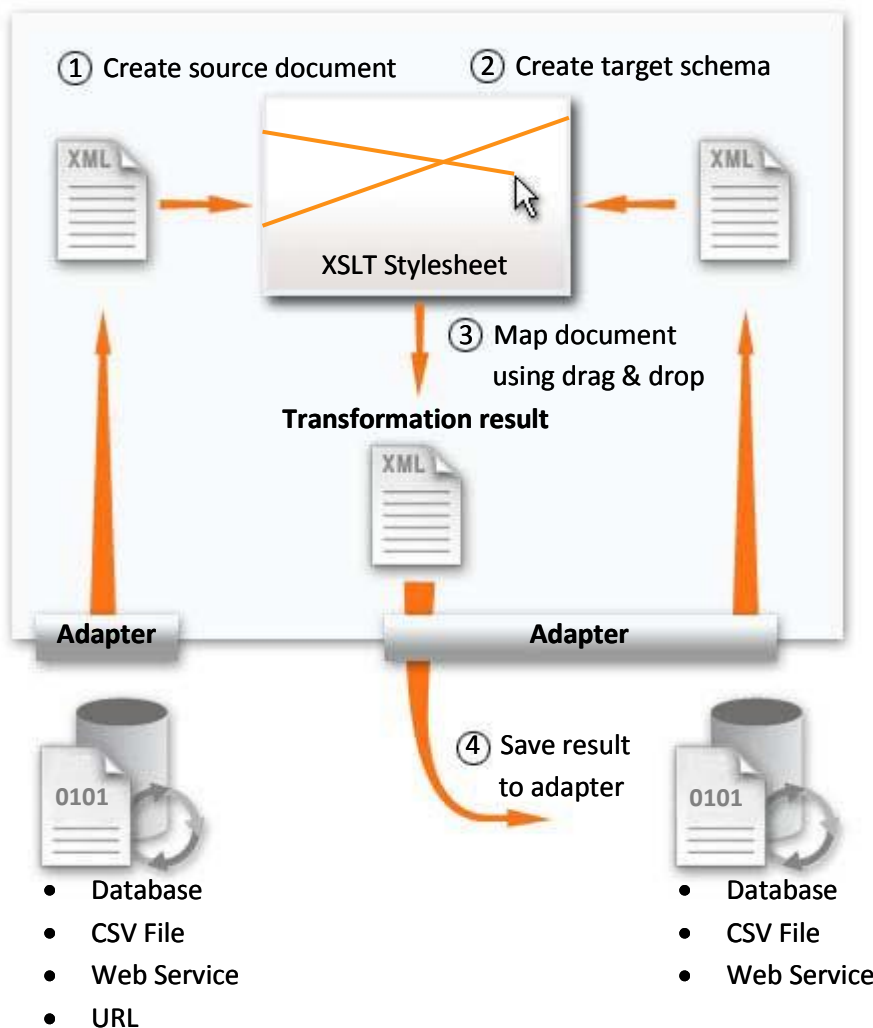
Visual Designer for XSLT

xsl:easy offers an easy way to create XSLT stylesheets in a graphical way. The structures of XML files are displayed as trees. The mapping between source and target schemas is established using drag & drop.

For advanced transformation needs xsl:easy contains a source code editor with syntax highlighting and code completion. Design your XSLT quicker – drag & drop XPath's from the source schema tree.

Universal Converter for Structured Data

If your data source or target format is not XML, the xsl:easy contains various adapters that provide connectivity to the non-XML world. The adapters convert other formats to and from XML. Built-in adapters include the conversion between CSV files, database connectivity using ODBC and the Web Service integration using SOAP over HTTP. The configuration of adapters is guided by intuitive wizard dialogs.

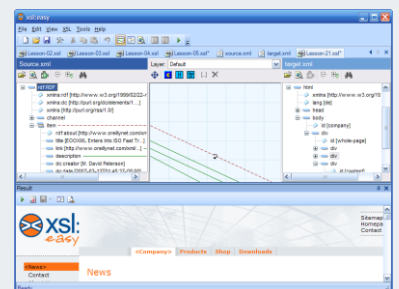


Key-Features

- Visual XSLT design
- Integrated XML editor
- Conversion between non-XML formats
- Extensible plug-in adapter architecture
- Additional command line interface for batch and scheduled transformations

Provided Adapters

- CSV File Format
- ODBC Database Connectivity
- Web Service Connectivity
- URL Reader



Preview of transformation result – RSS to HTML

The xsl:easy is available for download as a free trial version at: <http://www.xsl-easy.com>

Full license can be purchased in our online shop.

Visual XSLT Design

- Quick design of complex XSLT stylesheets without special training
- Visual mapping of data between source and target XML nodes
- Graphical representation and manipulation of XSLT stylesheets with symbols for XPath operators, functions, constants and XSLT extensions
- Complex transformation rules are intuitively designed with the XSL condition editor

XML Editor

- Edit source code of XSLT transformation and other XML files
- Syntax highlighting
- Code completion, XML and XSLT validation
- Drag & drop XPath expressions from source schema tree

XML Adapters

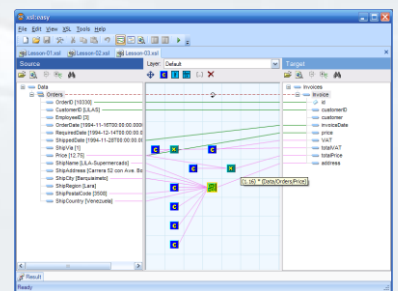
- Access various data sources such as databases, Web services, flat files and more with built-in adapters
- Transformation between the source and target adapters is designed visually as XSLT stylesheet
- Extensible plug-in adapter architecture
- Adapter Development Kit for creating and testing custom adapters is part of every xsl:easy installation
- Custom adapter development can be contracted from SoftProject

Command Line Interface

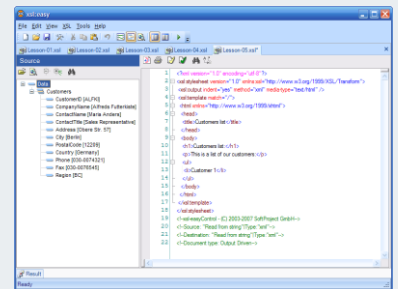
- Transformations designed with xsl:easy can be executed from the command line without graphical user interface
- The entire transformation process – from reading the documents out of the adapters, their transformation and up to saving the results – can be executed automatically
- Suitable for batch processing or scheduled execution

Other xsl:easy Products

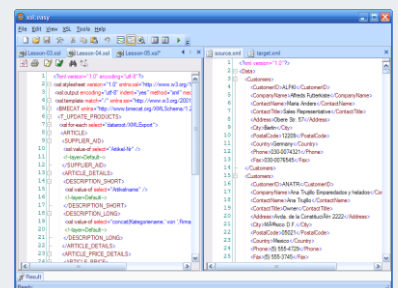
- Additional adapters for special data formats and integration with various systems



Mapping between source and target schemas with XPath operators and functions



Text only mode – manual transformation design, XPath expressions are available from source schema in tree view



Editing multiple XML and XSLT documents in source view

SoftProject
we connect solutions

SoftProject GmbH
Rheinstraße 83
D-76532 Baden-Baden
Tel.: +49 (0)7221 / 302 48-0
Fax: +49 (0)7221 / 302 48-29
E-Mail: info@softproject.de
http://www.softproject.de